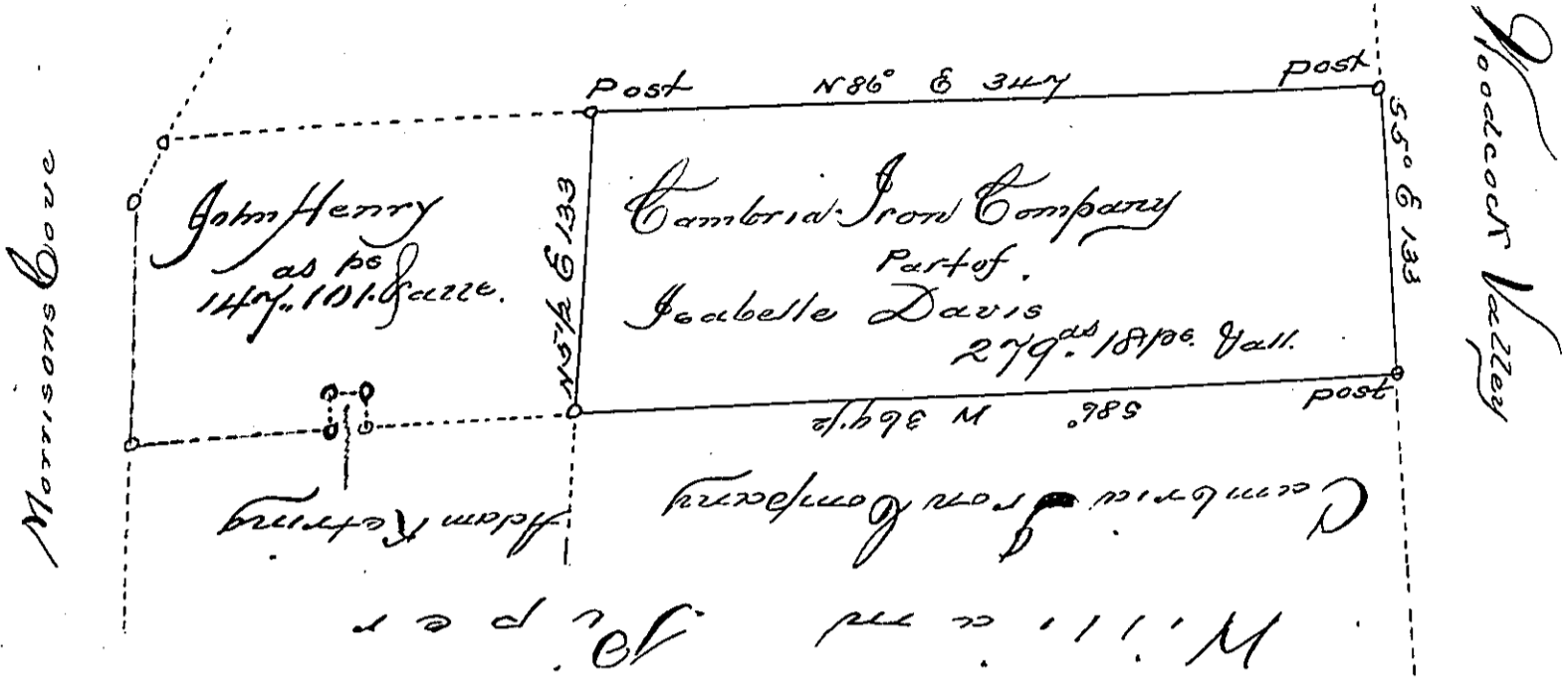


William Davis



Situate in Haverhill Township Bedford County Containing 279 acres  
 18 perches and the usual allowance of six ft. clear for Roads &c. Dis-  
 covered by David Peeler for patenting to the Cambridge Iron Com-  
 pany the 24 day of March, 1869, being a part of a larger tract  
 of land Originally Surveyed to Isabella Davis, on warranty dated  
 the 19<sup>th</sup> of Sept. 1794. Examined and approved the 21<sup>st</sup> day of  
 the 2<sup>nd</sup> mo<sup>th</sup> (February) 1878.

Hiram Blackburn C.S.

To Robert B. Beath  
S.Y.

IN TESTIMONY that the above is a copy of the original remaining on file in  
 the Department of Internal Affairs of Pennsylvania, made  
 conformably to an Act of Assembly approved the 16th day of  
 February, 1833, I have hereunto set my Hand and caused  
 the Seal of said Department to be affixed at Harrisburg,  
 this Sixth day of July, 1904.

*Joseph R. Penning*  
 Secretary of Internal Affairs.